



Tank Pumping Instructions

1500 Series BAT® Media Plants

GENERAL

Attention Jet Distributor: please make these instructions available to pumpers, owners and health officials.

Pumping Frequency: We recommend that the entire tank be pumped every three (3) years unless local regulations require a different schedule. Certain installations may require more frequent pumping. With their knowledge and training, Jet service personnel may recommend pumping the tank at an interval other than three years. Service begins with correcting the easiest problems that cause non-standard plant operation. If a problem is detected that cannot easily be corrected, the service person will recommend pumping the tank. Another firm usually provides this pumping service.

Disposal of Wastewater Resulting from Pumping: Wastewater disposal must comply with all local and state laws.

IMPORTANT—Removal and Reinstallation of the Aerator: Be extremely careful when handling the aerator. Its life depends on a straight shaft. Straightness tolerance of a new shaft is 10/1000". Never let the shaft touch anything but the liquid in the tank!

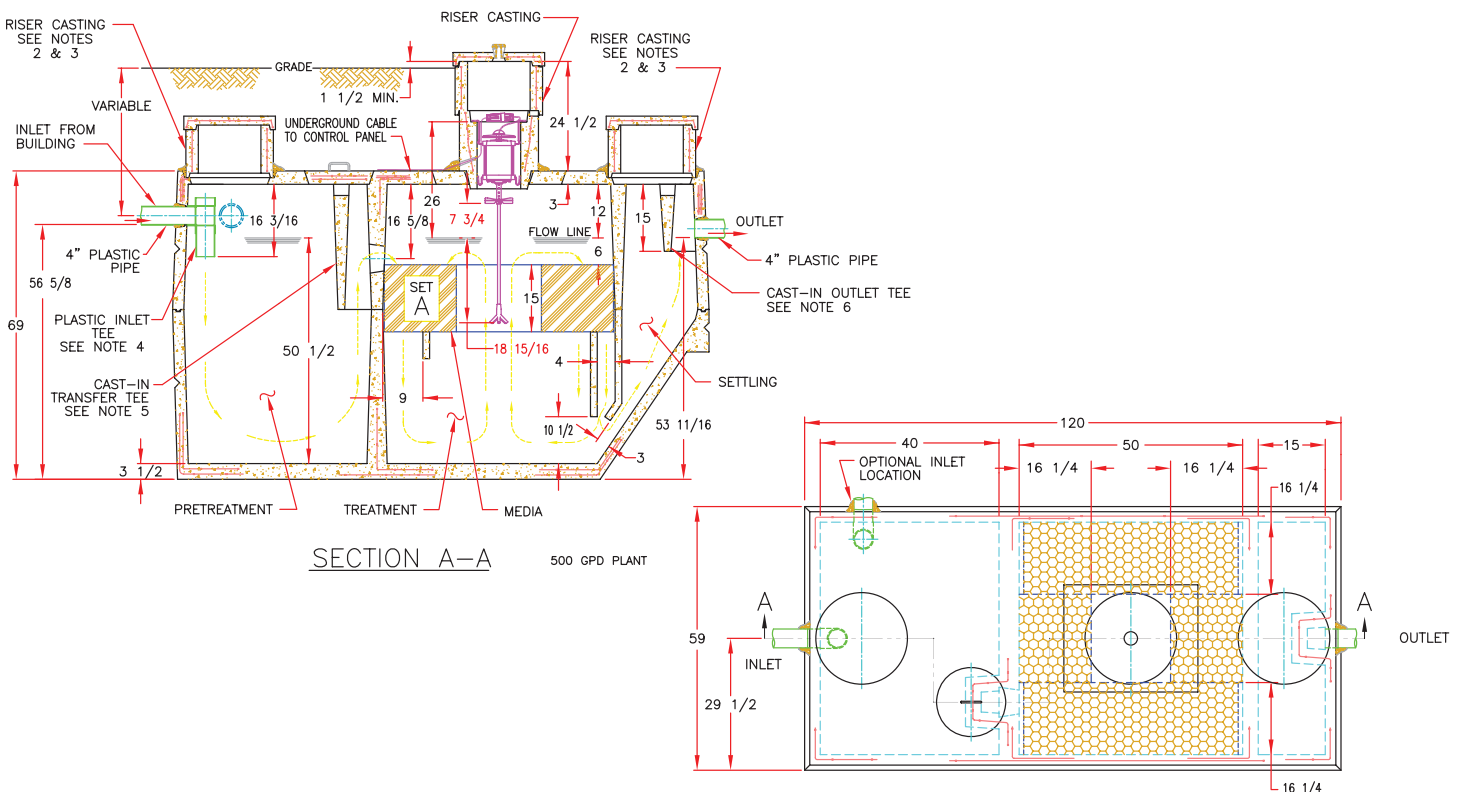
CAUTION: Air clean media before you begin pumping the tank. Refer to "Media Service Instructions".

- Media must be air cleaned before treatment compartment is pumped in order to eliminate risk of media displacement and damage.
- Do not pump pretreatment compartment before media is air cleaned. It will lower the water level in the entire tank, and make media air cleaning ineffective.

AERATOR REMOVAL

1. Turn "OFF" power to the aerator. You may turn off power at the aerator control panel or at the main electrical panel.
2. Remove mounting casting cover.
3. Disconnect aerator.
 - If aerator is wired directly without a watertight connector, enough excess cable should be available to remove the aerator from the mounting casting.
 - If aerator is wired with watertight connector, disconnect the two halves of the connector.
4. After completing Item 3, remove the aerator and place it in a protected area. **IMPORTANT:** If the aerator is placed on its side, the foam restrictor will touch the ground and bend the shaft. To protect the shaft, always secure the aerator or place it so that the shaft overhangs another object. You may use the mounting casting to secure the aerator.

J-500 through J-750



CAUTION

Be sure to air clean media before you begin to pump tank. Refer to “Media Service Instructions”.

- Media must be air cleaned before treatment compartment is pumped to eliminate risk of media displacement and damage.
- Do not pump pretreatment compartment before media is air cleaned. This will result in the water level in the entire tank being lowered, making air cleaning of the media ineffective.

1. Pretreatment Compartment (MUST BE PUMPED) - 475 gallons

Access to this compartment is gained by removing grass and dirt that may cover opening. This compartment should be completely pumped. It is not necessary to hose this compartment.

2. Treatment Compartment (MUST BE PUMPED) - 600 gallons

Access to this compartment is through the aerator-mounting manhole, which is at ground level. Carefully follow the instructions described at “Removal and Reinstallation of Aerator” on page 1 of this brochure.

Jet BAT Process Media® is installed in this compartment. Do not damage the media with the pumping hose during the pumping process. Carefully route the hose down the center of this open space. The chart below provides dimensions of the Media Open Spaces. The media is extremely fragile. Do not permit the hose to touch the media. This compartment should be completely pumped.

3. Settling Compartment (DO NOT PUMP) - 125 gallons.

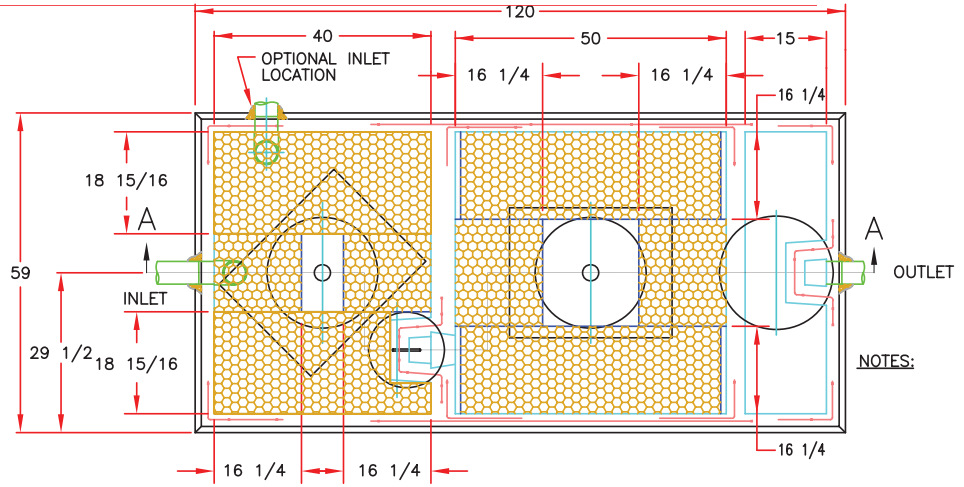
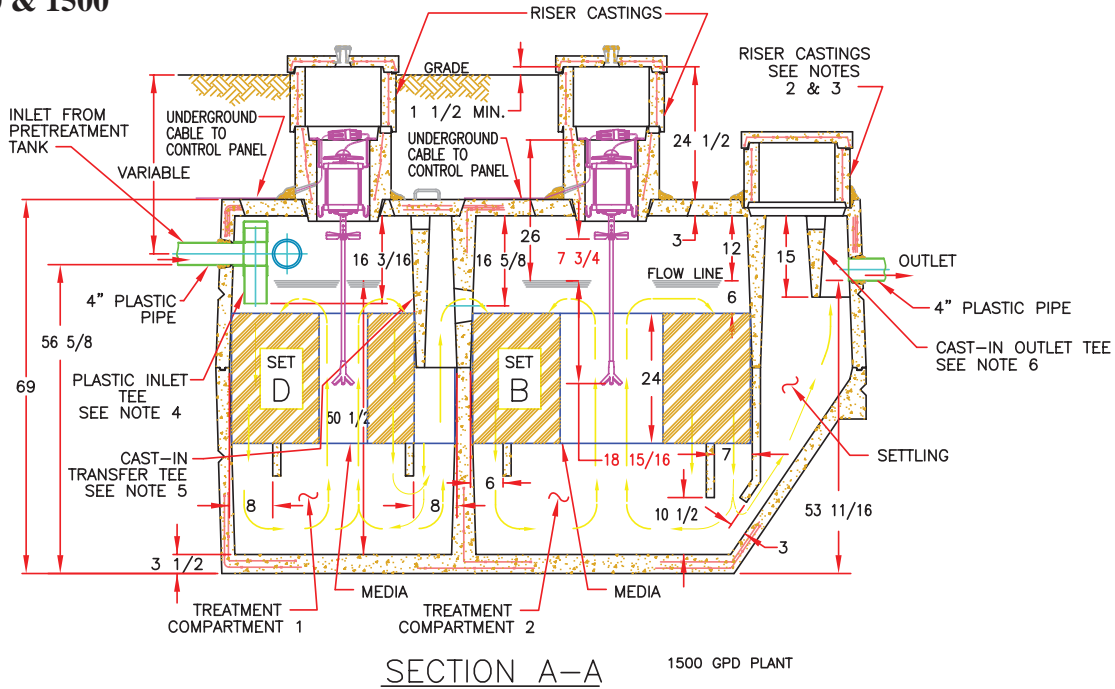
It is not necessary to pump this compartment because its contents flow down into the treatment compartment when that compartment is pumped.

Media Open Spaces

Model	Pre-Treatment Compartment		Treatment Compartment	
	Media Set	Open Space	Media Set	Open Space
J-500	No Media	-	Set A	16” x 18”
J-600	No Media	-	Set B	17” x 17”
J-750	No Media	-	Set B	17” x 17”
J-1000	Set C	36” x 17”	Set A	16” x 18”
J-1250	Set C	36” x 17”	Set B	17” x 17”
J-1500*	Set D	6” x 15”	Set B	17” x 17”

* The media open space in the first compartment of the 1500 gpd plant is only 6” x 15”. Be extremely careful when pumping this compartment.

J-1000, 1250 & 1500



CAUTION: Air clean media before beginning any tank pumping. Refer to “Media Service Instructions”.

- Media must be air cleaned before treatment is pumped to eliminate risk of media displacement and damage.
- Do not pump the pretreatment compartment before media is air cleaned, water level in the entire tank will be lowered, making air cleaning of the media ineffective.

1. Pretreatment Tank (MUST BE PUMPED)

- 1000-1200 gallons

The pretreatment tank may be a three compartment Jet Tank or a single compartment septic tank. In either case, completely pump the tank.

2. Treatment Compartments (MUST BE PUMPED)

- 1,075 gallons

Access to the TWO treatment compartments is through the aerator mounting casting, which is located at ground level.

Carefully follow the instruction described in this brochure on Page 1, “Aerator Removal”, and below, on this page, “Aerator Reinstallation”. Jet BAT Process Media® is installed in these compartments. Do not damage the media with the pumping hose during the pumping process. Please see the drawings and note the open space with no media located directly below the aerator mounting casting. Carefully route the pumping hose down the center of this open space. The media is extremely fragile. Do not permit the hose to touch the media. Please see the Media Open Spaces chart on Page 2.

3. Settling Compartment (DO NOT PUMP)

- 125 gallons

Follow the instructions provided at “Settling Compartment” on Page 2 under the heading, “J-500 Through J-750”.

AERATOR REINSTALLATION

1. Lower the aerator into the mounting casting, **being careful not to subject the shaft to bending or strain.**
2. Make sure that the rubber bumpers on the lower aerator brackets are pressing against all sides of the mounting, but be sure they are not pressing so tightly as to make aerator installation difficult. If the bumpers are not pressing against all sides, remove the aerator and slightly bend out the lower brackets. If the aerator is difficult to remove because the bumpers are pressing too tightly, slightly bend in the lower brackets before reinstallation.
3. Install a drip loop in the cable by pushing the cable down 1" or 2" below the point where it enters the aerator in order to channel away any water running down the cable so it cannot enter the aerator.
4. Look down at the installed aerator and rotate it clockwise until one of the brackets engages the anti rotation block that is cast in the mounting casting.
5. If the aerator has a watertight connector, reassemble the two halves.
6. Replace mounting casting cover.
7. **IMPORTANT:** aerators are equipped with a hose adapter on the top, and a 4-1/2" length of hose is attached to this adapter. Once the cover is replaced, open the top of the vent cap to check the position of this hose. It should be in the vent cap body, but it should not be close enough to the cap to restrict airflow. Be sure that the hose is properly installed in the green vent cap – it should not be bent or kinked when the mounting casting cover is replaced. The hose must be in place in order to insure fresh air for proper treatment.

J-153 PLANT RECORDS

The J-153 Plant may include the optional surface skimmer and tube settler. It uses the activated sludge treatment process.

1. Pretreatment Compartment (MUST BE PUMPED)

- 475 gallons

Carefully follow the instructions provided for the J-500 Plant on Page 2 of this brochure.

2. Aeration Compartment (MUST BE PUMPED) - 600 gallons

Jet BAT Process Media® is not installed in this tank. Carefully follow the instructions for the J-500 tank on Page 2 of this brochure, but ignore references to the media.

3. Settling Compartment (DO NOT PUMP) - 125 gallons

Follow the instructions provided for the J-500 tank under "Settling Compartment", Page 2.

