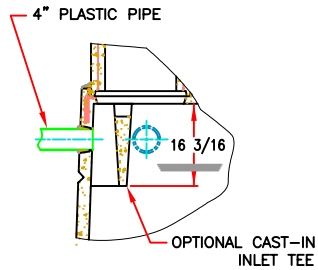
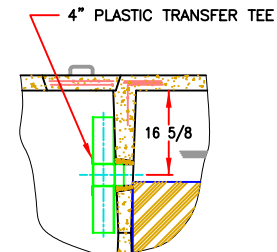


DETAIL 1



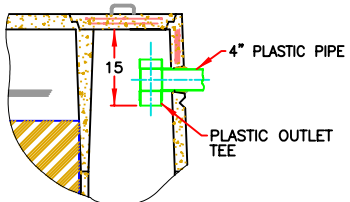
OPTIONAL INLET TEE

DETAIL 2

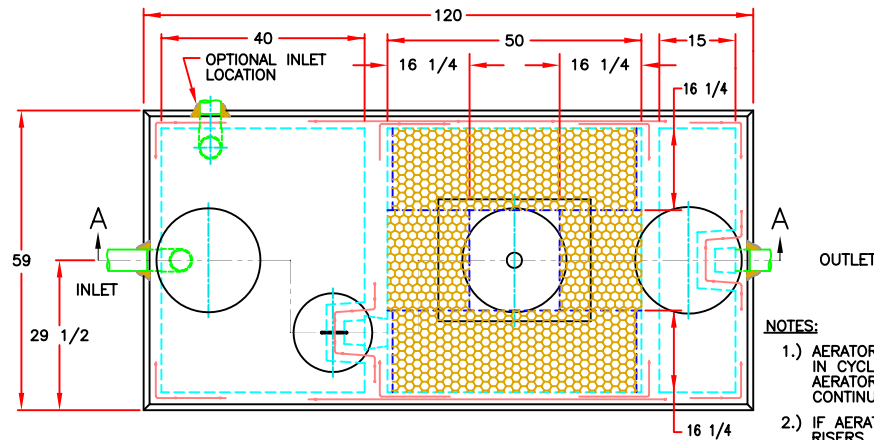


OPTIONAL TRANSFER TEE

DETAIL 3

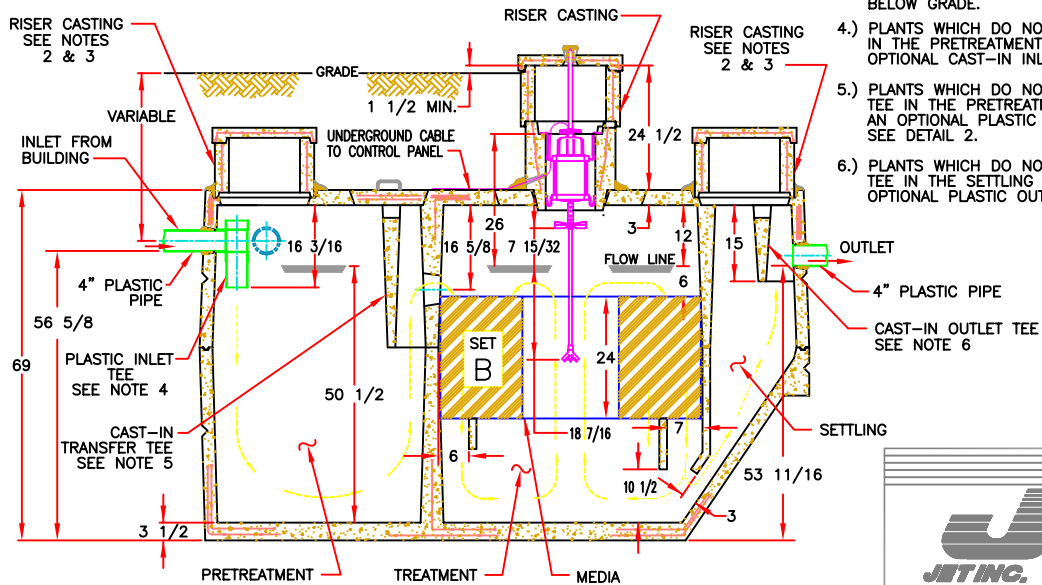


OPTIONAL OUTLET TEE



NOTES:

- 1.) AERATOR MODELS 565LL-S AND 665LL-FP IN CYCLED OR CONTINUOUS OPERATION OR AERATOR MODELS 560-S AND 660-FP IN CONTINUOUS OPERATION MUST BE USED.
- 2.) IF AERATOR MOUNTING CASTING HAS NO RISER, RISERS ARE NOT REQUIRED HERE. REMOVABLE CONCRETE COVERS ARE REQUIRED.
- 3.) IF AERATOR MOUNTING CASTING HAS A RISER(S), COVERED RISERS ARE REQUIRED HERE. RISERS SHOULD BE DEVELOPED TO GRADE OR TO 6"-12" BELOW GRADE.
- 4.) PLANTS WHICH DO NOT USE A PLASTIC INLET TEE IN THE PRETREATMENT COMPARTMENT MAY USE AN OPTIONAL CAST-IN INLET TEE. SEE DETAIL 1.
- 5.) PLANTS WHICH DO NOT HAVE A CAST-IN TRANSFER TEE IN THE PRETREATMENT COMPARTMENT MAY USE AN OPTIONAL PLASTIC TRANSFER TEE. SEE DETAIL 2.
- 6.) PLANTS WHICH DO NOT HAVE A CAST-IN OUTLET TEE IN THE SETTLING COMPARTMENT MAY USE AN OPTIONAL PLASTIC OUTLET TEE. SEE DETAIL 3.



SECTION A-A

| | | |
|---|--------------|-----------|
| | REVISED: | 05-18-01e |
| | DRAWN BY: | R. P. T. |
| | APPROVED BY: | D.S.M. |
| | DATE: | 3-15-94 |
| 750 GPD PLANT COMPONENT PARTS & INSTALLATION | SCALE: | NONE |
| ©MMI JET INC. | D | 12 |
| DRAWING NUMBER: | | J-750 |

PATENTED

FILE REF. No. ART-449