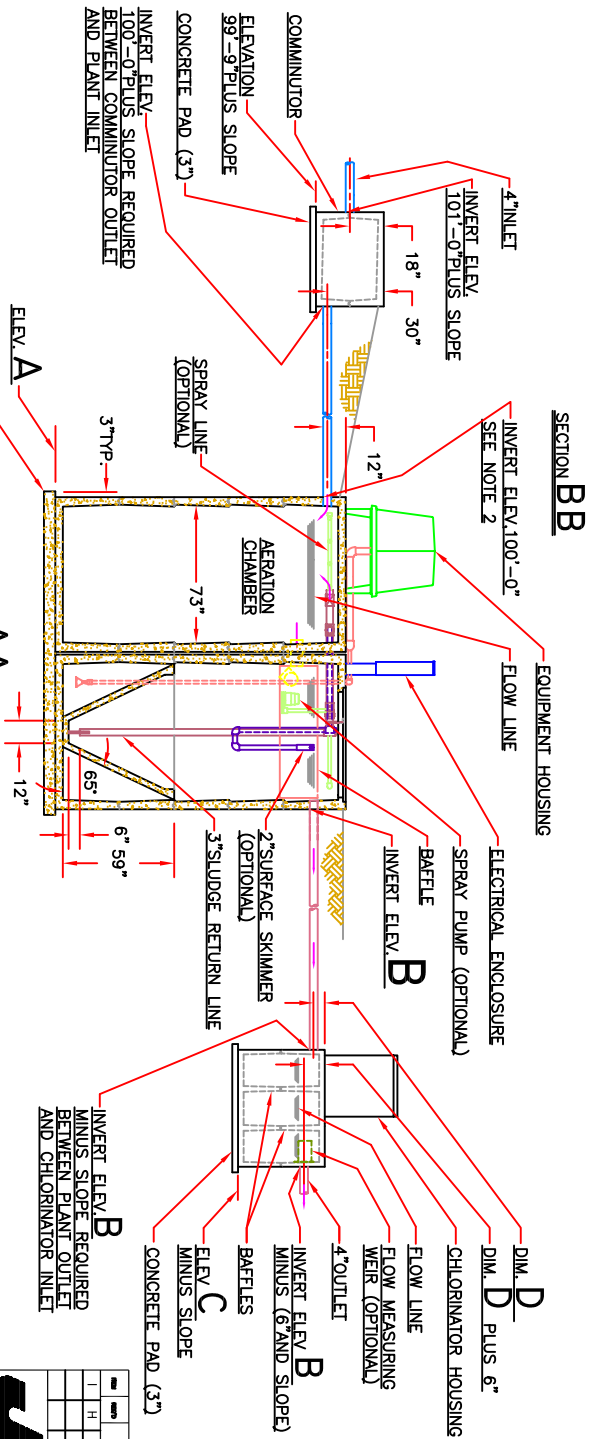
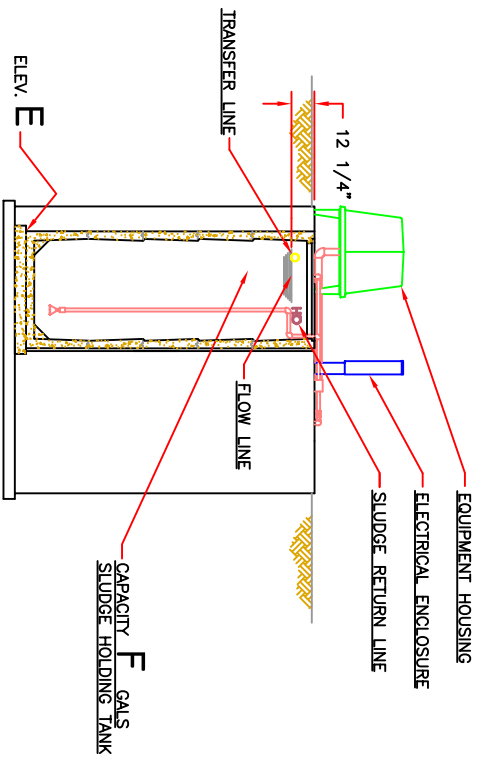


	F	F	E	E	E	D	C	B	A	PLANT SIZE
608	436	93'-10"	95'-6"	0'-10"	96'-2"	99'-0"	92'-10"	4,000		
780	436	92'-2"	95'-6"	0'-10"	96'-10"	99'-8"	92'-10"	5,000		
608	608	93'-10"	93'-10"	0'-6"	95'-10"	99'-0"	90'-4"	5,000		
780	780	92'-2"	93'-10"	0'-6"	96'-10"	100'-0"	90'-4"	7,500		
SERIES II	SERIES I	SERIES II	SERIES I	SERIES I	SERIES I	96'-6"	99'-8"	87'-10"	9,000	



- NOTES:  
 1. FOR ADDITIONAL INFORMATION REFER TO DESIGN CRITERIA CHART  
 2. TO MINIMIZE FALL THRU PLANT LOCATE INLET INVERT 6\"/>

MODEL	WIDTH	DEPTH	HEIGHT	PLANT SIZE					
I	H	G	F	E	D	C	B	A	PLANT SIZE

TOTAL: 3'0" x 1'-0"  
 4,000 TO 9,000 SERIES I  
 4,000 TO 5,000 SERIES II  
 SEE ALSO PLAIN VIEW 2  
 ICP 40-90 E

ICP 40-90 F