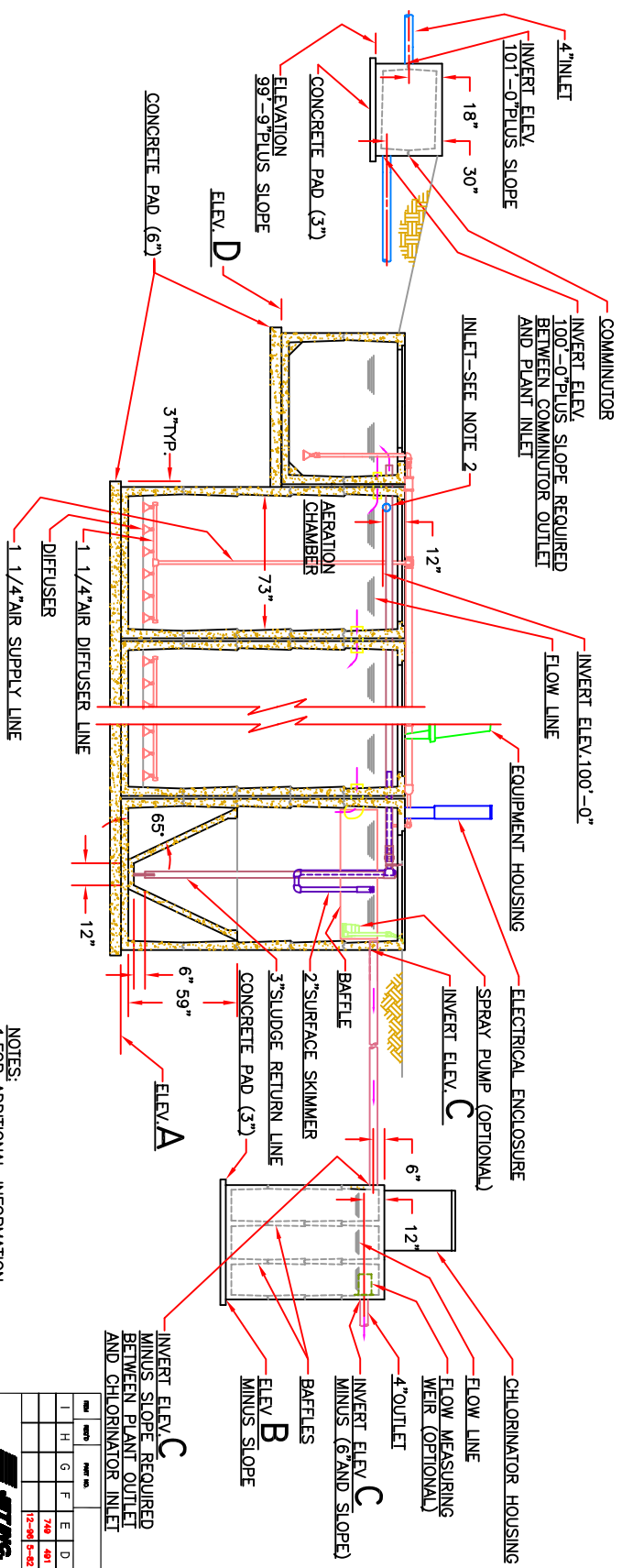


SECTION BB

SERIES II	SERIES I	E	D	C	B	A	PLANT SIZE
2291	95'-4"	97'-6"	94'-4"	87'-10"	10,000		
2291	95'-4"	98'-10"	94'-0"	87'-10"	11,000		
2291	95'-4"	99'-4"	94'-6"	87'-10"	12,000		
2291	95'-4"	98'-10"	94'-0"	90'-4"	13,000		
2291	95'-4"	99'-4"	94'-6"	90'-4"	14,000		
2291	95'-4"	97'-6"	92'-8"	87'-10"	15,000		
2291	95'-4"	98'-10"	94'-0"	87'-10"	16,000		
2291	95'-4"	98'-10"	94'-0"	87'-10"	17,000		
2291	95'-4"	99'-4"	92'-10"	87'-10"	18,000		
2291	95'-4"	97'-3"	90'-9"	87'-10"	19,000		
2291	95'-4"	97'-6"	91'-0"	87'-10"	20,000		
2291	95'-4"	98'-10"	91'-4"	87'-10"	21,000		
2291	95'-4"	98'-10"	92'-4"	87'-10"	22,000		
2291	95'-4"	98'-10"	92'-4"	87'-10"	23,000		
2291	95'-4"	99'-4"	92'-10"	87'-10"	24,000		



SECTION AA

NOTES:
 1. FOR ADDITIONAL INFORMATION REFER TO DESIGN CRITERIA CHART
 2. TO MINIMIZE FALL THRU PLANT LOCATE INLET INVERT 6" ABOVE FLOW LINE

JCP
 COMMERCIAL PLANT
 (ELEVATION VIEW)
 10,000 TO 24,000 SERIES I
 10,000 TO 15,000 SERIES II
 SEE ALSO PLAN VIEW

SCALE: 3/8" = 1'-0"

DATE: 4-26-85

APPROVED BY: [Signature]

DESIGNED BY: [Signature]

CHECKED BY: [Signature]

PROJECT NO: JCP 100-240 E